

FY 2024 MAINTENANCE DREDGING MISSISSIPPI RIVER SHALLOW DRAFT CROSSINGS



PROJECT: Mississippi River Baton Rouge to the Gulf of Mexico, LA.

REACH: Shallow Draft Crossings

OPERATIONS MANAGER: Michelle Kornick

PHONE: (504) 862-1842

LOCAL SPONSOR: State of Louisiana

DESCRIPTION OF WORK:

Maintain 9' x 300' channel from Mile 320 to Baton Rouge, LA at Mile 233.8.

HISTORICAL FREQUENCY: Annual
LAST DREDGED: 2023
TYPE OF DREDGE: Dustpan
ESTIMATED QUANTITY: 700,000 CY
ESTIMATED COST: \$800,000

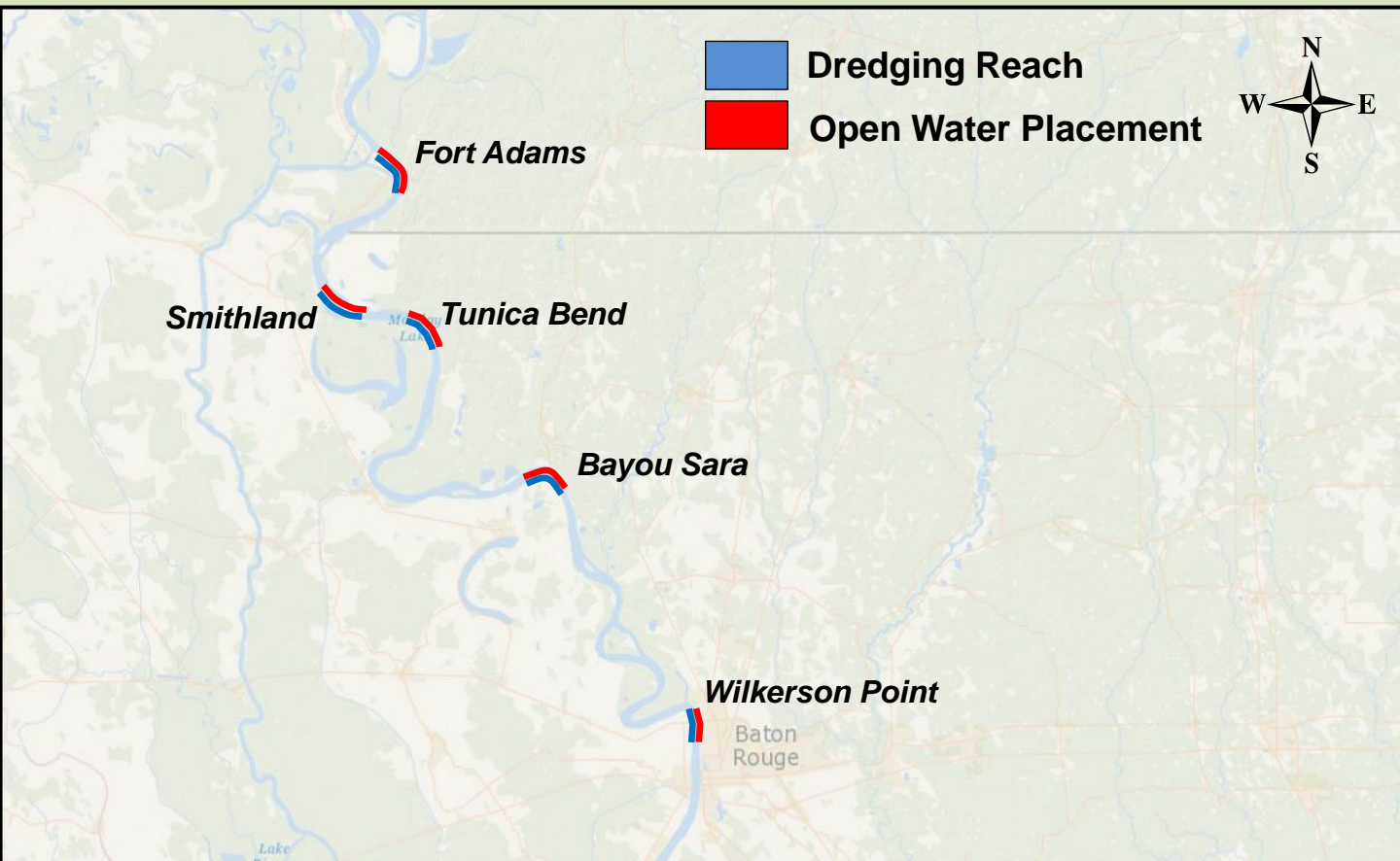
DREDGING REACH:

Mississippi River Shallow Draft Crossings
(Work performed either by government dustpan dredge or contractor dredge under a multi-year contract)

START WORK: Sept 2024
DURATION: 1 month

DISPOSAL AREA/TYPE:

Mississippi River/Open Water (Dredged material discharged in deep waters below each crossing)



MISSISSIPPI RIVER DEEP DRAFT CROSSINGS

Fiscal Year	Disposal Area	Dredging Quantity (CY)
2001	Open Water	628,451
2002	Open Water	323,623
2003	Open Water	623,692
2004	Open Water	452,464
2005	Open Water	824,628
2006	Open Water	441,035
2007	Open Water	623,878
2008	Open Water	325,695
2009	Open Water	579,040
2010	Open Water	366,180
2011	Open Water	814,478
2012	Open Water	1,926,194
2013	Open Water	375,000
2015	Open Water	566,580
2016	Open Water	472,066
2018	Open Water	1,136,030
2020	Open Water	1,236,134
2021	Open Water	428,189
2023	Open Water	462,726

SHALLOW DRAFT CROSSINGS

Fort Adams	Mile 311-314
Smithland	Mile 299.7
Tunica Bend	Mile 293
Bayou Sara	Mile 266
Wilkinson Point	Mile 235



East & West Baton Rouge, Pointe Coupee, West Feliciana, Parishes